

 **CABOMETRYX**[®]
(cabozantinib) tablets
60 mg | 40 mg | 20 mg

Getting started on CABOMETRYX **IN LIVER CANCER**

Patient
portrayal

What is CABOMETRYX?

CABOMETRYX is a prescription medicine used to treat:

- People with liver cancer (hepatocellular carcinoma) who have been previously treated with the medicine sorafenib.

SELECT IMPORTANT SAFETY INFORMATION

CABOMETRYX may cause serious side effects, including bleeding (hemorrhage).




CABOMETRYX can cause severe bleeding that may lead to death. Tell your healthcare provider right away if you get any signs of bleeding during treatment with CABOMETRYX, including: coughing up blood or blood clots; vomiting blood or if your vomit looks like coffee grounds; red or black (looks like tar) stools; menstrual bleeding that is heavier than normal; and any unusual or heavy bleeding.

Please see Important Safety Information on pages 12-15 and [tap here](#) for the Patient Information in the full Prescribing Information.

You have been prescribed CABOMETYX® (cabozantinib)

Welcome! Here you can learn more about CABOMETYX, a medicine proven to treat certain adults with liver cancer (hepatocellular carcinoma) after treatment with sorafenib.

Remember

-  Always talk to your healthcare team if you have any questions or concerns.
-  [Tap here](#) to visit CABOMETYX.com for more information and helpful resources.
-  The information in this handbook is not a substitute for advice from your healthcare team.

SELECT IMPORTANT SAFETY INFORMATION

CABOMETYX may cause serious side effects, including:

A tear in your stomach or intestinal wall (perforation) or an abnormal connection between 2 parts of your body (fistula). Tell your healthcare provider right away if you get tenderness or pain in your stomach area (abdomen) that is severe or that does not go away.

Blood clots, stroke, heart attack, and chest pain. Get emergency help right away if you get:

- Swelling or pain in your arms or legs
- Shortness of breath
- Feel lightheaded or faint
- Sweating more than usual
- Numbness or weakness of your face, arm, or leg, especially on one side of your body
- Sudden confusion, trouble speaking or understanding
- Sudden trouble seeing in one or both eyes
- Sudden trouble walking
- Dizziness, loss of balance or coordination
- A sudden severe headache

Please see Important Safety Information on pages 12-15 and [tap here](#) for the Patient Information in the full Prescribing Information.

Learn more about your prescribed treatment

How CABOMETYX may work p. **4**

Proven results from the clinical study p. **6**

Taking your CABOMETYX p. **8**

Important Safety Information p. **12**

Working with your healthcare team to help manage certain side effects p. **16**

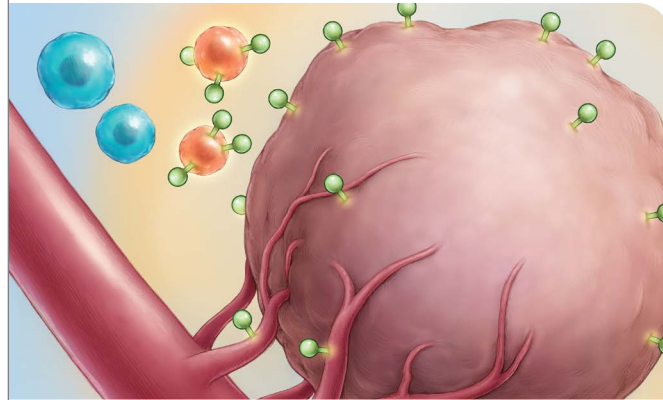
Accessing financial support information and resources p. **18**



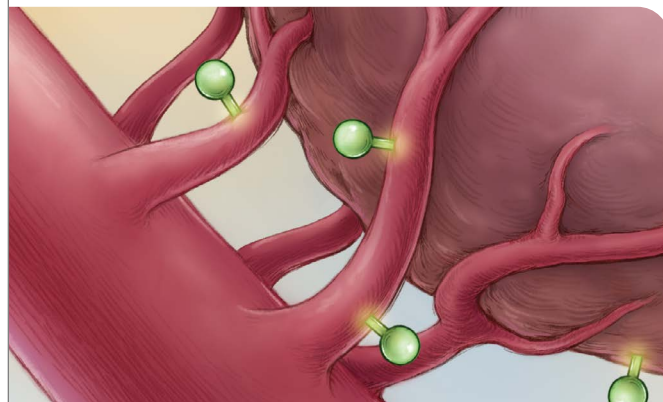
Getting educational resources for your treatment journey p. **20**



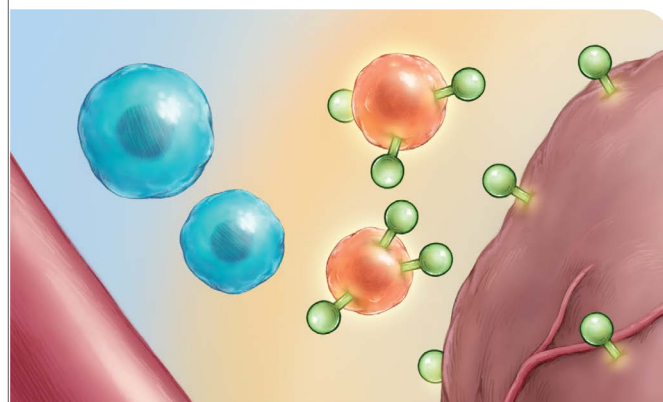
What happens in cancer



Your body's cells include proteins that send signals telling cells to grow and divide.



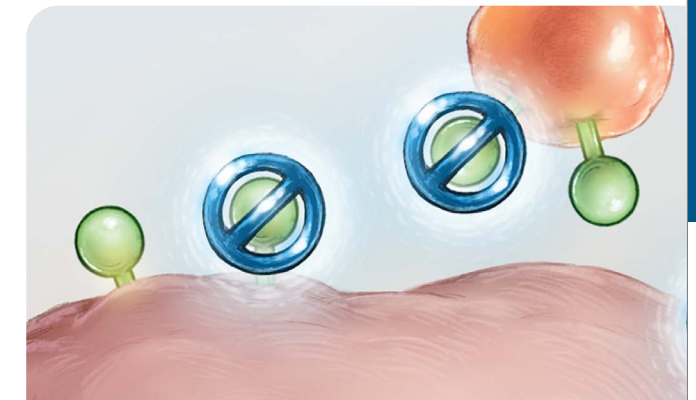
In cancer, these signals cause blood vessels to grow and feed the tumor (angiogenesis).



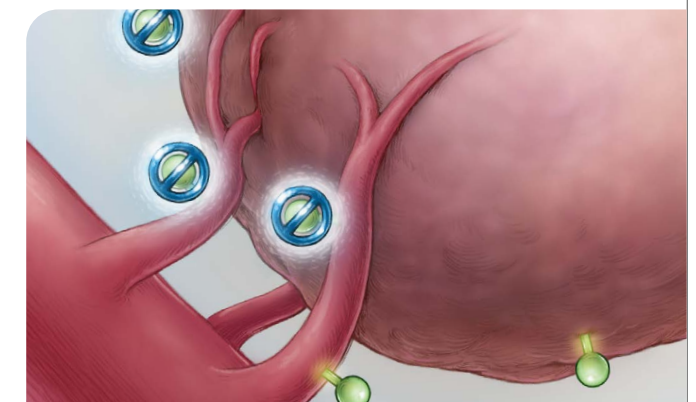
The immune cells that usually help find and kill cancer cells are stopped by immunosuppressive cells.

How CABOMETYX® (cabozantinib) may work

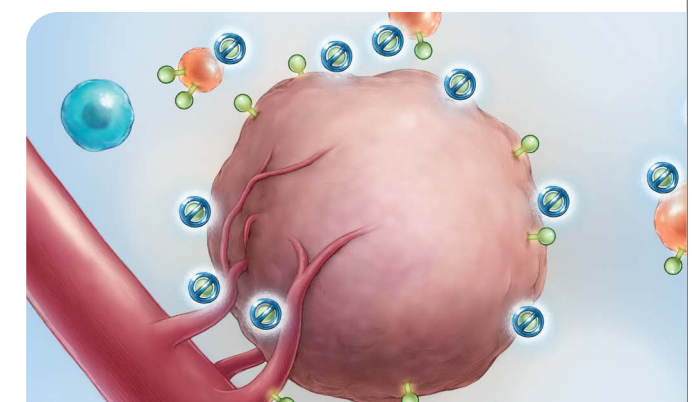
CABOMETYX is believed to reduce or slow the proteins' signals that tell cancer cells to grow and divide.



CABOMETYX may limit the growth of blood vessels that feed the tumor. It also may help the body kill cancer cells.



With CABOMETYX, tumors may stop growing.



Key



protein



immunosuppressive cells



immune cells



CABOMETYX

Treatment with CABOMETYX may impact both cancer and normal cells—which may result in certain side effects. For information about CABOMETYX side effects, please see Important Safety Information throughout this brochure, on pages 12-15, and [tap here](#) for the Patient Information in the full Prescribing Information.

Proven results of CABOMETYX® (cabozantinib) in liver cancer

A clinical study enrolled adults with liver cancer who had been treated before with a medicine called sorafenib*: 470 were given CABOMETYX and 237 were given placebo.

People stayed on treatment until their tumor started to grow again, or they had a side effect that could not be managed.

*Sorafenib is a prescription medicine used to treat adults with liver cancer who can not be treated with surgery.

If you want to learn more about CABOMETYX, [tap here](#)

SELECT IMPORTANT SAFETY INFORMATION

High blood pressure (hypertension). Hypertension is common with CABOMETYX and sometimes can be severe. Your healthcare provider will check your blood pressure before starting CABOMETYX and regularly during treatment with CABOMETYX. If needed, your healthcare provider may prescribe medicine to treat your high blood pressure. Tell your healthcare provider if you develop severe headaches, nose bleeds, tiredness or confusion, vision changes, chest pain, trouble breathing, irregular heartbeat, or blood in your urine.

Diarrhea. Diarrhea is common with CABOMETYX and can be severe. If needed, your healthcare provider may prescribe medicine to treat your diarrhea. Tell your healthcare provider right away if you have frequent loose, watery bowel movements.

Please see Important Safety Information on pages 12-15 and [tap here](#) for the Patient Information in the full Prescribing Information.

CABOMETYX results showed:

People taking CABOMETYX had increased survival

People were more likely to
LIVE LONGER

Median[†] of **10.2** months for CABOMETYX vs **8.0** months for placebo

People taking CABOMETYX went longer without tumors growing or spreading

People were able to
LIVE 2x LONGER WITHOUT TUMOR GROWTH

Median[†] of **5.2** months for CABOMETYX vs **1.9** months for placebo

Each person's results with CABOMETYX may be different.

[†]Median is the middle value in a set of measurements—for some it was shorter; for others, longer.

Taking your CABOMETYX® (cabozantinib)

CABOMETYX is a once-daily tablet. Take as prescribed by your doctor.

DO	DO NOT
<ul style="list-style-type: none">• Swallow your CABOMETYX tablets whole• Take your CABOMETYX dose at the same time everyday, or as prescribed• Take CABOMETYX at least 1 hour before or at least 2 hours after eating	<ul style="list-style-type: none">• Take CABOMETYX with food• Crush the tablet• Drink grapefruit juice, eat grapefruit, or take supplements that contain grapefruit or St. John's wort during treatment with CABOMETYX

Tell your healthcare provider about all the medicines you take, including prescription or over-the-counter medicines, vitamins, and herbal supplements.

Call your doctor or nurse right away if you take too much CABOMETYX.

What if you forget to take your CABOMETYX?

If your next dose is in:

Less than 12 hours

- Do not try to make up the missed dose
- Take the next dose when you usually take it

12 hours or more

- Talk to your doctor or nurse if you miss a dose

This is not intended as medical advice. Talk to your doctor if you have questions.

To learn more about dosing, please visit [CABOMETYX.com](https://www.cabometyx.com).

Watch an actual patient share their experience, including tips on how to remember to take CABOMETYX. [Tap here](#)

Taking your CABOMETYX® (cabozantinib)

The recommended starting dosage



CABOMETYX 60 mg once daily

Your doctor or nurse will determine the dose that is right for you

Each person who takes CABOMETYX may respond differently.

It is important to work closely with your healthcare team

Your healthcare team members know you and are experts on managing your condition — but they can't do it without **you**.



Contact your team immediately with any questions or concerns.



Take an active role by knowing who you should contact and how you should contact them to get your questions or concerns addressed.

The sooner they know, the sooner they can help



Your primary contact may be your oncologist or nurse.

Other team members may include:

- nurse navigator
- social worker
- patient navigator
- pharmacist
- psychiatrist
- nutritionist
- home health aide

Ask whose expertise can help you and then actively work with them to address any issues or find additional support that may be available to you.

Indication and Important Safety Information

What is CABOMETYX?

CABOMETYX is a prescription medicine used to treat:

- People with liver cancer (hepatocellular carcinoma) who have been previously treated with the medicine sorafenib.

What are the possible side effects of CABOMETYX?

CABOMETYX may cause serious side effects, including:

Bleeding (hemorrhage). CABOMETYX can cause severe bleeding that may lead to death. Tell your healthcare provider right away if you get any signs of bleeding during treatment with CABOMETYX, including:

- Coughing up blood or blood clots
- Vomiting blood or if your vomit looks like coffee grounds
- Red or black (looks like tar) stools
- Menstrual bleeding that is heavier than normal
- Any unusual or heavy bleeding

A tear in your stomach or intestinal wall (perforation) or an abnormal connection between 2 parts of your body (fistula). Tell your healthcare provider right away if you get tenderness or pain in your stomach area (abdomen) that is severe or that does not go away.

Blood clots, stroke, heart attack, and chest pain. Get emergency help right away if you get:

- Swelling or pain in your arms or legs
- Shortness of breath
- Feel lightheaded or faint
- Sweating more than usual
- Numbness or weakness of your face, arm, or leg, especially on one side of your body
- Sudden confusion, trouble speaking or understanding
- Sudden trouble seeing in one or both eyes
- Sudden trouble walking
- Dizziness, loss of balance or coordination
- A sudden severe headache

High blood pressure (hypertension). Hypertension is common with CABOMETYX and sometimes can be severe. Your healthcare provider will check your blood pressure before starting CABOMETYX and regularly during treatment with CABOMETYX. If needed, your healthcare provider may prescribe medicine to treat your high blood pressure. Tell your healthcare provider if you develop severe headaches, nose bleeds, tiredness or confusion, vision changes, chest pain, trouble breathing, irregular heartbeat, or blood in your urine.

Diarrhea. Diarrhea is common with CABOMETYX and can be severe. If needed, your healthcare provider may prescribe medicine to treat your diarrhea. Tell your healthcare provider right away if you have frequent loose, watery bowel movements.

A skin problem called hand-foot skin reaction. Hand-foot skin reactions are common and can be severe. Tell your healthcare provider right away if you have rashes, redness, pain, swelling, or blisters on the palms of your hands or soles of your feet.

Protein in your urine and possible kidney problems. Symptoms may include swelling in your hands, arms, legs, or feet. Your healthcare provider will check you for this problem during treatment with CABOMETYX.

Severe jaw bone problems (osteonecrosis). Your healthcare provider should examine your mouth before you start and during treatment with CABOMETYX. Tell your dentist that you are taking CABOMETYX. It is important for you to practice good mouth care during treatment with CABOMETYX. Tell your healthcare provider right away if you develop any symptoms of jaw problems, including: jaw pain, toothache, or sores on your gums.

Wound healing problems. Wound healing problems have happened in people who take CABOMETYX. Tell your healthcare provider if you plan to have any surgery before or during treatment with CABOMETYX.

- You should stop taking CABOMETYX at least 3 weeks before planned surgery.
- Your healthcare provider should tell you when you may start taking CABOMETYX again after surgery.

Reversible posterior leukoencephalopathy syndrome (RPLS). A condition called reversible posterior leukoencephalopathy syndrome can happen during treatment with CABOMETYX. Tell your healthcare provider right away if you have headaches, seizures, confusion, changes in vision, or problems thinking.

Change in thyroid function. CABOMETYX can cause changes in your thyroid function, including changes to thyroid hormone levels in your blood. Your healthcare provider will do blood tests to check your thyroid function before and during treatment with CABOMETYX.

Important Safety Information (Cont'd)

Decreased calcium level in your blood (hypocalcemia). CABOMETYX can cause you to have a decreased amount of calcium in your blood. Your healthcare provider will do blood tests to check you for this problem and give you calcium if needed.

Tell your healthcare provider right away if you get any of the following signs or symptoms:

- Muscle stiffness or muscle spasms
- Numbness or tingling in your fingers, toes, or around your mouth
- Seizures
- Sudden weight gain
- Swelling of your arms, hands, legs, and ankles

Your healthcare provider may change your dose, temporarily stop, or permanently stop treatment with CABOMETYX if you have certain side effects.

The most common side effects of CABOMETYX include:

- Tiredness
- Decreased appetite
- Nausea and vomiting
- Weight loss
- Constipation

CABOMETYX may cause fertility problems in females and males, which may affect your ability to have children. Talk to your healthcare provider if you have concerns about fertility.

These are not all of the possible side effects of CABOMETYX. Call your doctor for medical advice about side effects. You may report side effects to FDA at 1-800-FDA-1088 or www.fda.gov/medwatch.

Before you take CABOMETYX, tell your healthcare provider about all of your medical conditions, including if you:

- Have had a liver problem other than liver cancer.
- Have a recent history of bleeding, including coughing up or vomiting blood, or black tarry stools.
- Have an open or healing wound.
- Have high blood pressure.
- Have a low calcium level in your blood (hypocalcemia).
- Plan to have any surgery, dental procedure, or have had a recent surgery. You should stop treatment with CABOMETYX at least 3 weeks before planned surgery.
- Are pregnant, or plan to become pregnant. CABOMETYX can harm your unborn baby.
 - If you are able to become pregnant, your healthcare provider will check your pregnancy status before you start treatment with CABOMETYX.

- Females who are able to become pregnant should use effective birth control (contraception) during treatment and for 4 months after your final dose of CABOMETYX.
- Talk to your healthcare provider about birth control methods that may be right for you.
- If you become pregnant or think you are pregnant, tell your healthcare provider right away.
- Are breastfeeding or plan to breastfeed. It is not known if CABOMETYX passes into your breast milk. Do not breastfeed during treatment and for 4 months after your final dose of CABOMETYX.

Tell your healthcare provider about all the medicines you take, including prescription or over-the-counter medicines, vitamins, and herbal supplements. CABOMETYX and certain other medicines may affect each other, causing side effects.

What should I avoid while taking CABOMETYX?

Avoid drinking grapefruit juice, eating grapefruit, or taking supplements that contain grapefruit or St. John's wort during treatment with CABOMETYX.

Please see Important Safety Information on pages 12-15 and [tap here](#) for the Patient Information in the full Prescribing Information.

Managing side effects

CABOMETYX® (cabozantinib) can cause certain side effects. The sooner you share information, the sooner your healthcare team can help you manage certain side effects.

We have an approach called **AIM** to help you share information with your healthcare team



ACKNOWLEDGE

if you are feeling different; this may be a symptom of a side effect



INFORM

your healthcare team right away



MANAGE

side effects by working with your healthcare team

SELECT IMPORTANT SAFETY INFORMATION

Wound healing problems. Wound healing problems have happened in people who take CABOMETYX. Tell your healthcare provider if you plan to have any surgery before or during treatment with CABOMETYX.

- You should stop taking CABOMETYX at least 3 weeks before planned surgery.
- Your healthcare provider should tell you when you may start taking CABOMETYX again after surgery.

Please see Important Safety Information on pages 12-15 and [tap here](#) for the Patient Information in the full Prescribing Information.

How your healthcare team may help you manage certain side effects

Side effects can happen at any time, including in the first weeks or months after starting treatment with CABOMETYX.

What your healthcare team may do to help manage certain side effects



Your dose may be adjusted based on how your body responds to the medicine



Your dose may be temporarily or permanently lowered or stopped



Dose adjustments are not setbacks, since they may help you stay on treatment, if appropriate

Please note that not all side effects can be managed, and some may lead to permanent discontinuation of the medicine.

See how an actual patient and their healthcare team work together to help manage certain side effects. [Tap here](#)

Financial support information and resources



To learn more about how EASE can help you, contact us at:

1-844-900-EASE
(1-844-900-3273)

Exelixis Access Services (EASE) is your resource for questions and needs related to insurance coverage, financial assistance, and treatment support for CABOMETYX® (cabozantinib).

Helping You Start and Stay on CABOMETYX

Your EASE Case Manager is available by phone to help you:

- Understand if your health insurance covers CABOMETYX tablets and what your out-of-pocket costs for CABOMETYX may be
- Learn about your financial support options

To sign up or get more information about EASE, [tap here](#)

If you are commercially insured...

EASE Co-pay Program

Eligible, commercially insured patients may pay as little as \$0 per month. Annual and transaction limits apply. The EASE Co-Pay Program is not available to patients receiving prescription reimbursement under any federal, state, or government-funded insurance programs or where prohibited by law. Additional Terms and Conditions apply.

If you are uninsured, or insured but cannot afford your medicine...

EASE Patient Assistance Program

May provide you with CABOMETYX free of charge if you qualify. Additional restrictions and eligibility rules apply.

This description of the Exelixis® Access Services program is for informational purposes only. Exelixis makes no representation or guarantee concerning reimbursement or coverage for any service or item. Information provided through the Exelixis Access Services program does not constitute medical or legal advice and is not intended to be a substitute for a consultation with a licensed healthcare provider, legal counsel, or applicable third-party payer(s). Exelixis reserves the right to modify the program at any time without notice.

Access. Assistance. Along the journey.

 **CALL: 1-844-900-EASE**
(1-844-900-3273)

 **Monday to Friday**
8:00 AM to 8:00 PM (ET)

Educational resources and lifestyle tips



Get support for your treatment journey

The BE CONNECTED support program is designed to offer educational information for you or someone you are caring for who is taking CABOMETYX. You can learn more about what you may expect while on treatment with CABOMETYX.

- Recognizing side effects, and working with your healthcare team
- Where to find useful resources
- Lifestyle tips offering wellness support
- Information about organizations that may offer support



Sign up for
BE CONNECTED today.
[Tap here](#)

For questions about treatment, please speak with your healthcare team.

Limit one Patient Care Kit per patient, US residents only. Additional restrictions and eligibility rules apply. Exelixis may at its sole option modify these terms and conditions without notice.

Please see Important Safety Information on pages 12-15 and [tap here](#) for the Patient Information in the full Prescribing Information.



© 2023 Exelixis, Inc.



05/23 CA-2090-2